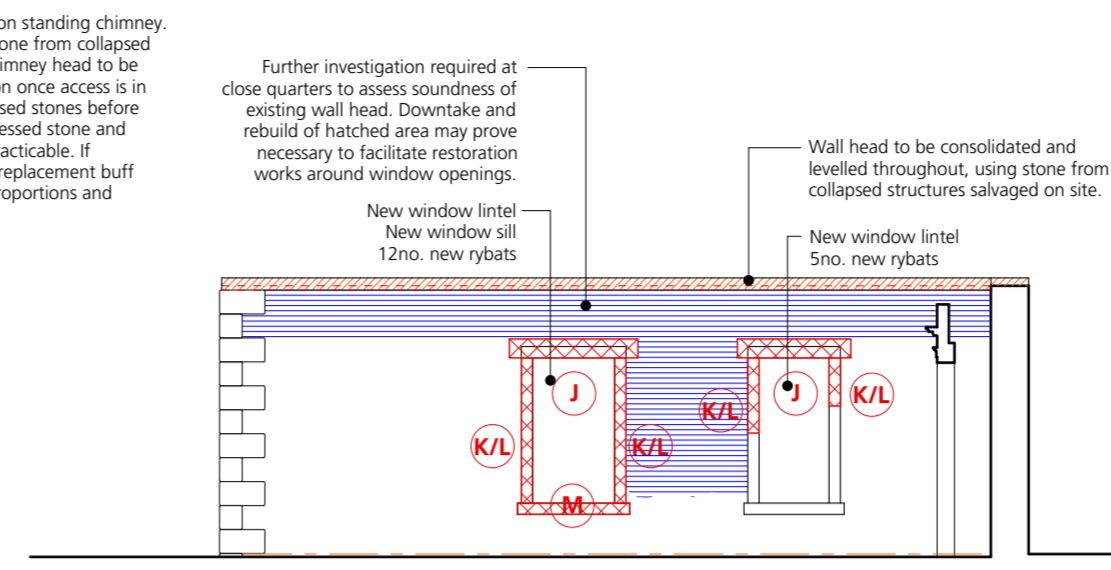
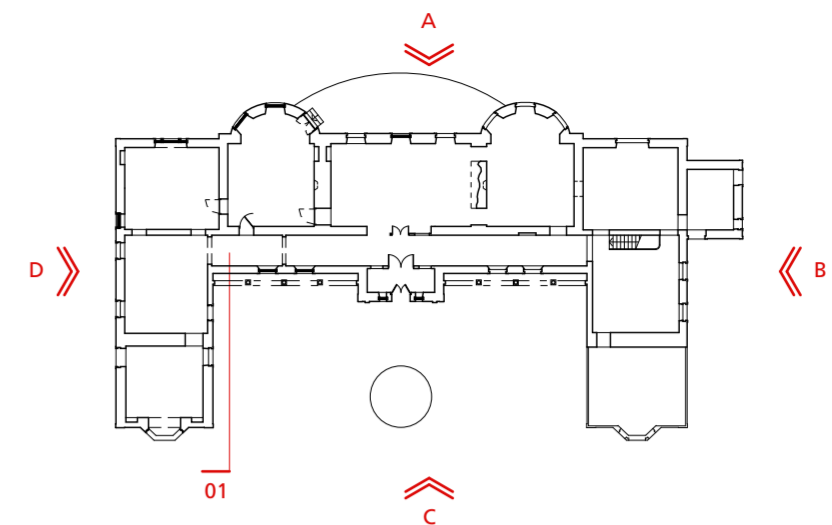


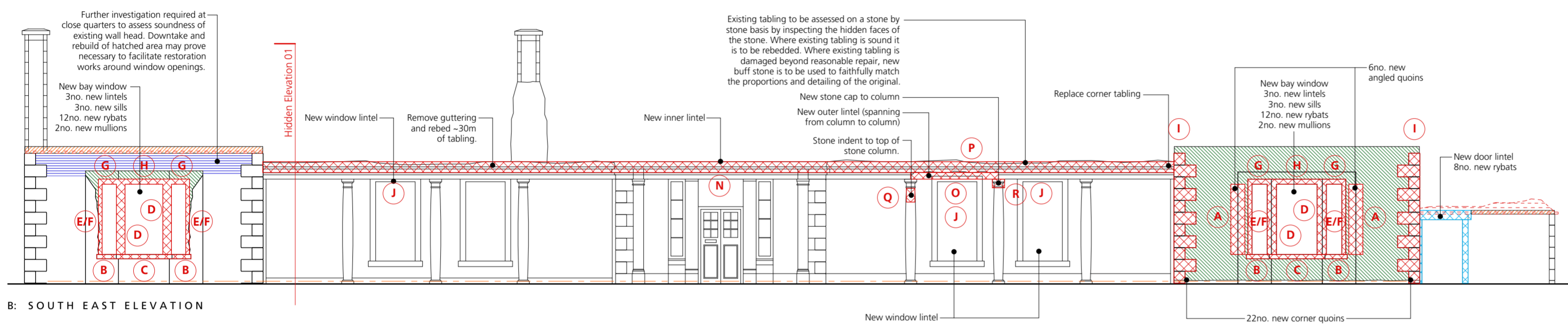
A: NORTH EAST ELEVATION



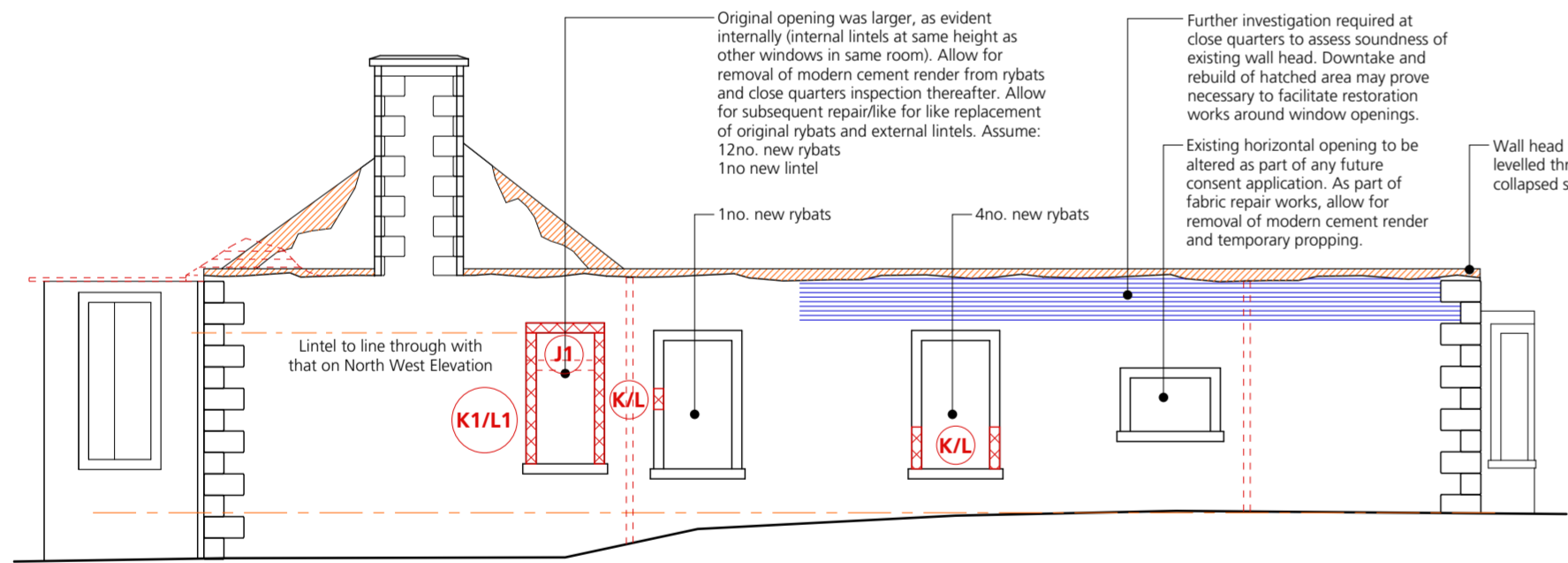
HIDDEN ELEVATION 01



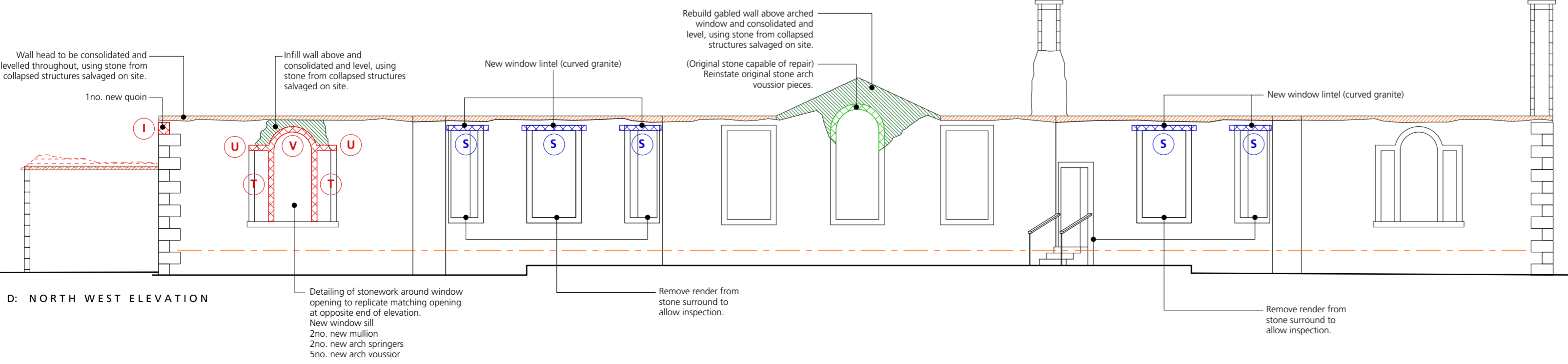
KEY PLAN



B: SOUTH EAST ELEVATION



C: SOUTH WEST ELEVATION



D: NORTH WEST ELEVATION

SCHEDULE

Ref	Name	Approx Size *	Number
A	Angled Quoins	600 x 200 x 305	6
B	Bay window cill	900 x 300 x 152	4
C	Bay window cill	1500 x 300 x 152	2
D	Bay window Mullion	250 x 200 x 2000	4
E	Bay window Outband Rybats	600 x 200 x 325	12
F	Bay window Inband Rybats	250 x 500 x 325	12
G	Bay window lintel	1000 x 175 x 305	4
H	Bay window lintel	1600 x 175 x 305	2
I	Quoins	600 x 200 x 325	23
J	Window Lintels	1500 x 175 x 305	7
J1	Window Lintel	1500 x 175 x 305	1
K	Outband Rybats	550 x 175 x 325	20
K1	Outband Rybats	550 x 175 x 325	6
L	Inband Rybats	200 x 450 x 325	15
L1	Inband Rybats	200 x 450 x 325	6
M	Window Cills	1500 x 300 x 152	2
N	Inner Lintel	2000 x 600 x 152	1
O	Outer Lintel	2400 x 150 x 325	1
P	String Course	350 x 150	6
Q	Column Indents	200 x 200 x 200	1
R	Column Cap	350 x 350 x 200	1
S	Curved Granite Window Lintels	2000 x 500 x 305	5
T	Mullions	152 x 152 x 2000	2
U	5 piece arch - Springer	900 x 200 x 325	2
V	5 piece arch - Voussoir	500 x 200 x 325	2

* Full site measurements and templates to be taken prior to any ordering, manufacturing, or workmanship.

KEY

- Replacement buff sandstone (Whittonfell or Scotch Buff)
- Replacement red sandstone (Red Lazenby or Doddington)
- Replacement granite (provide samples prior to ordering)
- Reinstatement stone arch present on site
- Consolidate and level the existing stone wall head
- Further investigation of structure required - see note.
- Rebuild in rubble stonework salvaged from site or local equivalent.

NOTES

- 01 ALL REPAIR AND RESTORATION WORK TO BE CARRIED OUT ON A 'LIKE FOR LIKE' BASIS TO FAITHFULLY MATCH ORIGINAL DETAILING AS EVIDENT ON SITE.
- 02 WHERE INTERNAL TIMBER SAFE LINTELS ARE MISSING (PERISHED BY FIRE) THEY ARE TO BE REPLACED WITH ROBESLEE (OEA) PRECAST CONCRETE LINTELS.
- 03 THIS DRAWING MUST BE READ IN CONJUNCTION WITH LDN ARCHITECTS OUTLINE MORTAR SPECIFICATION (DESCRIBING PREPARATION REQUIREMENTS AND LIME MIXES FOR RUBBLE, FINE ASHLAR DRESSINGS AND SANDSTONE JOINTS >10MM) AND LDN ARCHITECTS METHOD STATEMENT FOR THE REMOVAL OF MODERN CEMENT RENDER FINISHES.
- 04 STONEMARK IDENTIFIED FOR REPLACEMENT IS SHOWING SIGNS OF DAMAGE OR STRESS (CAUSED BY PREVIOUS FIRE DAMAGE) THAT MAKES IT NOT POSSIBLE TO REUSE.
- 05 ALL EXISTING MODERN CEMENT RENDER TO BE CAREFULLY REMOVED - REFER TO LDN ARCHITECTS METHOD STATEMENT FOR FURTHER DETAIL
- 06 MODERN CONCRETE FLOOR SLABS IN ROOMS ONE AND TWO TO BE CAREFULLY REMOVED, FOLLOWING THE STRUCTURAL ENGINEER'S METHOD STATEMENT

NOTE:

Do NOT scale from this drawing.
 All dimensions are shown in millimetres unless otherwise stated/shown. All dimensions MUST be checked before any works take place.
 This is a CAD produced drawing - do NOT alter manually.

